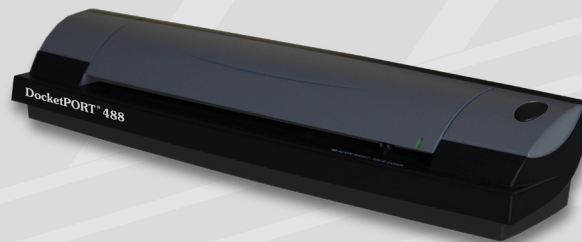


# DocketPORT®

Convenience. Speed. Quality.™



**Easily  
Handles:**



Documents



Receipts



Insurance Cards

**DocketPORT.com is your official source for the entire DocketPORT line of products.**

## The next generation of personal productivity. Scans full size documents on both sides simultaneously.

The sturdy DocketPORT 488 handles any of your scanning tasks with ease. Dependable and versatile, this duplex scanner processes media from business cards to legal-sized documents. It even quickly deals with media made out of laminated and embossed materials, letting you scan more types of media.

The DocketPORT 488 has an ultra compact footprint and is USB powered so it fits into most any work environment. You can start scanning right away with the included DocketSCAN II software, an easy to use imaging program that lets you scan items as PDFs, JPEGs, or TIFFs. The scanner comes standard with a limited one year warranty.

### DocketPORT 488

Duplex Card & Document Scanner

**Part Number: DP488**

## Features

**Ultra compact footprint** – Takes up far less space than comparable flat bed and ADF scanners; perfect for both portable and desktop users

**USB power and convenience** – No external power adapter required and no “warm-up” wait time to scan

**Superior media handling** – Easily handles laminated cards like IDs, driver’s licenses and insurance cards, plus credit cards with raised characters

**Professional grade quality** – Sturdy and dependable for environments requiring frequent scanning such as hospitals, banks and law offices

**High-resolution scanning** – Scan documents at 600dpi for crisp, clear results

**Includes DocketSCAN II software** – Powerful imaging software with a Scan-to-PDF utility

## System Requirements

Pentium III 300 or Equivalent Processor  
Windows 7 certified, Vista, XP, 2003, 2000  
128 MB RAM (512 MB for XP and Vista)  
200 MB hard disk  
CD ROM Drive  
USB Port

## Specifications

Scan Modes	Internal 48-bit analog-to-digital conversion for R, G, B three-color channels
Scan Speed	10 ppm (pages per minute) B&W; 4 ppm color
Scan Area	Maximum 8.5”x14 (legal page)
Media Thickness	0.1 mm - 1.2mm
Interface	USB 2.0 (High Speed)
Optical Resolution	600 x 1200 dpi
Dimensions (LxWxH)	12.25”x 2.0” x 2.65” (311 x 51 x 67mm)
Scanner Weight	21 oz (590g) without cable
TWAIN and WIA compliant	Yes
Image Sensor	CMOS CIS (Contact Image Sensor)
Paper Sensor	Mechanical
Cable Length	59 inches (150 cm)
Power Consumption	0.01W Suspend, 0.2W Stand by, 2.0W during scan
Regulatory Requirement	FCC Class B, CE
Environment Requirement	RoHS, WEEE
Part Number	DP488

For More Information: [www.UniLinkinc.com](http://www.UniLinkinc.com)



800.666.2980  
Sales@UniLinkinc.com

DocketPORT 488/ **Part Number: DP488**